



## SAILING INSTRUCTIONS

### 2017 J/Fest New England

Sail Newport

Check In: Friday 1500-1930 August 11<sup>th</sup>, 2017

Skipper's Meeting: Friday 1930 August 11<sup>th</sup>, 2017

Racing/Dinner: Saturday August 12<sup>th</sup>, 2017

Racing/Awards: Sunday August 13<sup>th</sup>, 2017

#### 1) RULES

- a) The regatta will be governed by the rules as defined in the Racing Rules of Sailing.
- b) The J/Fest regatta website can be found at <http://jfestnewengland.com>
- c) Safety Equipment Requirements: All boats shall comply with the US Safety Equipment requirements published by US Sailing for the "US Nearshore" racing category and shall comply with their class rules, where applicable.
  - i) In the event of a conflict between these Requirements and applicable class rules, the class rule shall apply.
- d) The Protest Committee may impose suitable penalties, other than a disqualification, for violations of non-Part 2 rules. This changes rule 64.1.
- e) The 2017 PHRF-NB Regulations shall apply to boat sailing under PHRF. There are no weight limits except as specified below for specific classes.
- f) The current class rules shall apply to all boats racing as a one-design class, except as noted in these sailing instructions or class addendums to these sailing instructions.
- g) J/109 Class -- This is part of the East Coast Regatta Series Trophy. This is a J/109 Class "weight limited event per Class Rule 6.2" as part of the East Coast Regatta Series Championship.



## 5) SCHEDULE OF RACES

- a) The first warning for the first class will be made at 1100 on Saturday and Sunday.
- b) Except as is provided in SI 9b, after the first race each day the Race Committee may start classes in any order.
- c) No warning for a new race will be made after 1400 Sunday.

## 6) RENDEZVOUS Locations (See Appendix 1)

- a) Area "A" – Rose Island
- b) Area "B" – Jamestown
- c) Area "C" – RI Sound
- d) Area "D" – Vicinity of 200deg / 1.0 NM from Half-Way Rock

## 7) CHECK-IN and RETIREMENT

- a) Prior to the warning signal for the first race each day, all boats shall check in with the Race Committee Signal Boat by passing astern on starboard tack and announcing their sail number. The Race Committee will acknowledge by responding with the number heard. No check-ins will be acknowledged by VHF.
- b) A boat retiring is requested to inform the Race Committee on their circle VHF channel.

## 8) COURSES AND MARKS

- a) The courses for drop marks for each circle are described in Appendix 2 of the sailing instructions.
- b) Courses using government marks will be identified using buoy designations as listed in the Southbay Race chart 2017 edition. Copies will be provided in skipper bags and are available from the Sail Newport office. It is not intended for vessel navigation, which should be done using NOAA chart 13221.

## 9) CHANGE OF THE NEXT LEG OF THE COURSE

- a) To change the next leg of the course, the RC will lay a new mark (or move the finishing line) and remove the original mark as soon as practicable. When in a subsequent change a new mark is replaced, it will be replaced by an original mark.
- b) In the case of a change of course, the offset shall be omitted.
- c) A leg may be changed up to 005° in bearing and/or 0.2 nm in length without a signal or change of mark color. This changes RRS 33.

## 10) THE START

- a) Races will be started in accordance with rule 26.
- b) The intended start for the first race each day will be as listed in the scratch sheet. However, the Race Committee may not start classes in numerical order based on prevailing conditions at the assigned circle or other factors. Moreover, the Race Committee may combine two or more classes into one start by displaying multiple class flags at the warning. The Race Committee will endeavor to announce the next class(es) to start on the circle channel.
- c) A boat starting later than 5 minutes after her starting signal will be scored Did Not Start. This changes rule A4.
- d) The starting line will be between a staff displaying an orange flag on the Race Committee Signal Boat and the course side of the port-end starting mark.
- e) Boats whose warning signal has not been made shall keep clear of the starting area.

#### 11) INDIVIDUAL RECALLS

The Race Committee will endeavor to hail each premature starter over the respective circle channel. Failure to make such announcement, nor the timing or order of any announcement, shall not be grounds for redress. This changes rule 62.1 (a).

#### 12) THE FINISH

The finishing line will be between a staff displaying a BLUE flag on the Race Committee Signal Boat and the course side of the finishing mark as described in SI Appendix 2.

#### 13) GOVERNMENT MARKS

Government buoys have no required side except when specified as marks of the course. Caution should be exercised for safe navigation.

#### 14) PENALTY SYSTEM

- a) If class rules specify a penalty, a boat that may have broken a rule of Part 2 while racing may take a penalty at the time of the incident as provided in her class rules.
- b) For all boat where the class rule do not specify a penalty, the two-turns penalty as described in rule 44.2 is changed as follows;
  - i) A boat may take a One-Turn Penalty when she may have broken a rule of Part 2 or rule 31 while racing. However, when she may have broken a rule of Part 2 while in the zone around a mark other than a starting mark, her penalty shall be a Two-Turns Penalty.

#### 15) POST-RACE PENALTIES

- a) After a race a boat that may have broken a rule of Part 2 or rule 31 while racing may take a Post-Race penalty for that incident. The penalty shall be a scoring penalty, calculated as stated in rule 44.3(c), however rule 44.1 (a) and (b) apply. The Post Race Penalty shall be:
  - i) 20%, if taken before the protest time limit, or,
  - ii) 30%, if taken after the protest time limit but before the beginning of a hearing involving the incident.

#### 16) PROTESTS AND REQUESTS FOR REDRESS

- a) Boats intending to protest shall inform the Race Committee both their intention and the boat being protested as soon as possible after finishing or withdrawing from the race.
- b) Protest or requests for redress shall be submitted to the Protest Committee at Sail Newport as soon as possible, but not later than one hour after the Race Committee Signal Boat for that circle has docked. The time limit for filing a protest will be posted on the Official Notice Board.
- c) Protest notices will be posted as soon as possible on the Official Notice Board. As a convenience to racers, protest notices may also be posted on the regatta's yachtscoring page, in the unofficial notices section.
- d) Protest hearings will take place at Sail Newport as soon as possible after the notices are posted. The Protest Committee will attempt to hear protest in the order of receipt.
- e) Representatives of boats who are parties to a hearing shall remain on call in the vicinity of the protest rooms.
- f) When a boat has been involved in an incident that may be subject to protest, it is her responsibility to check the protest notices at the end of protest filing time to see if she is cited in a protest. Failure of any boat to appear when called for a hearing will be considered by the Protest Committee as grounds for proceeding under rule 63.3 (b).

- g) Rule 63.5 is changed by adding, "A protest involving contact may be heard by the Protest Committee even though the requirements of rule 61.1 (a) and 61.3 have not been fulfilled."
- h) On the last scheduled day of racing (Sunday), a request for redress based on a Protest Committee's decision shall be delivered in writing to the Protest Committee no later than 30 minutes after the decision was posted. This changes rule 62.2.

17) SCORING

- a) One race is required to constitute a series.
- b) A boats series score will be the total of her race scores. There will be no drop races. This changes rule A2.
- c) For scoring purposes, as needed, the distance used will be that as calculated by the Race Committee.

18) PRIZES

Prizes will be awarded as described in the Notice of Race.

19) NOTES

- a) Competitors are reminded that Narragansett Bay is considered restricted channels for commercial traffic and other vessels restricted in their ability to maneuver. Competitors must comply with the government right-of-way rules when in proximity to commercial or privileged marine traffic.
- b) All times herein are Eastern Daylight times. Bearings are in degrees magnetic and are approximate. Distances used herein are expressed in nautical miles (when not otherwise defined) and are approximate.
- c) Newport tides (Station 8452660)

DAY	DATE	HIGH TIDE	LOW TIDE	HEIGHT
FRI	AUG11	11:00 AM	4:27 PM	High 3.8 Low 0.2
SAT	AUG12	11:48 AM	5:12 PM	High 3.9 Low 0.3
SUN	AUG13	12:40 AM	6:03 PM	High 3.9 Low 0.5

Emergency Contact

- Immediately contact the PRO of your racing circle
- If necessary call 911, or hail Coast Guard on channel 16
  - Contact Vincent Pattavina 401-595-8397 (on water POC)
- Contact Sail Newport Main Office, 401-846-1983 (on land POC)

# Appendix 1 – Amendment 1



## Appendix 1 - Circle, Class Assignments and Rendezvous Locations

2017 J/Fest New England  
Sail Newport

### BLUE CIRCLE

VHF Channel 71

Classes: J/109, J/105, J/30

### RED CIRCLE

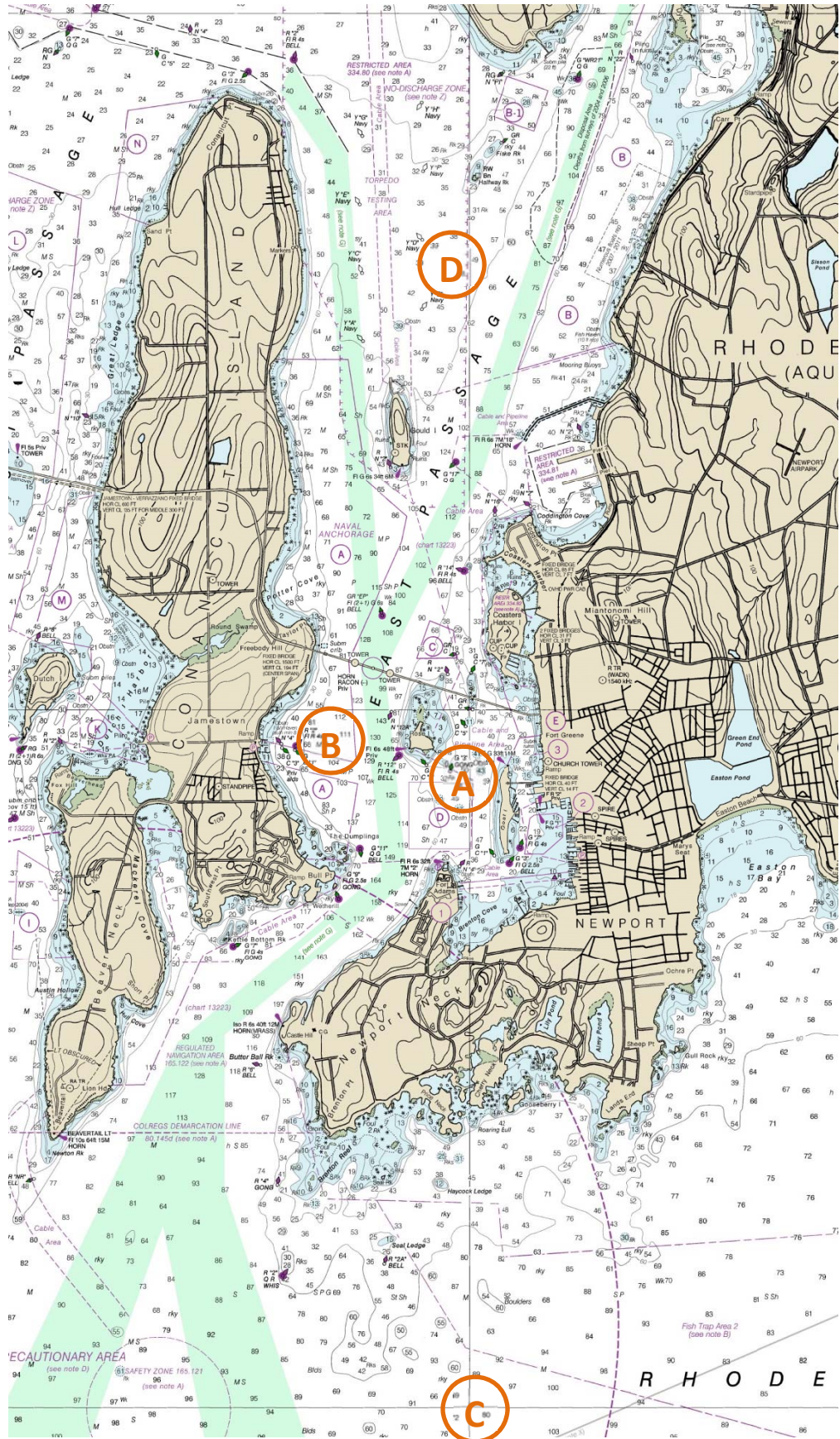
VHF Channel 72

Classes: J/24, J/70, J/22, PHRF

Note: J/70 US Youth Championship is covered by a separate SI

# Appendix 1

## Rendezvous Locations



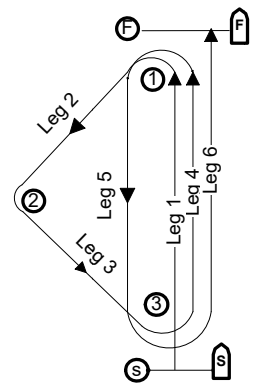
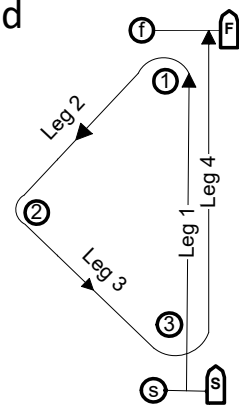
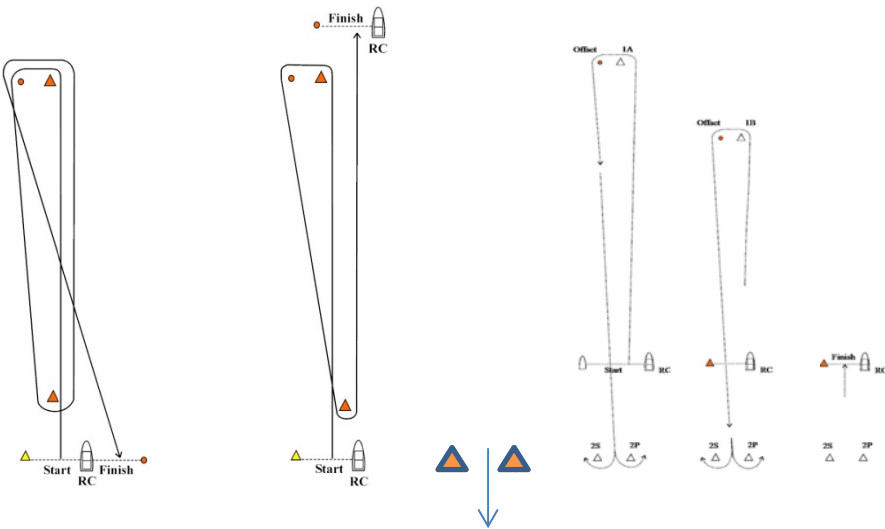
# Appendix 2



## Appendix 2 - Drop Mark Courses

2017 J/Fest New England  
Sail Newport

### Course Diagrams



**Course "W"**  
Even # legs

**Course "W"**  
Odd # legs

**Gate Marks**

**Course "V"**

**Course "K"**

**Course "O"**



## Appendix 2

### A COURSES

- A1. Course "W" is a Windward/Leeward course with a windward offset mark.
- A2. Course "V" is a Windward/Leeward course with a windward offset mark, gates will be 0.5 NM below the start/finish line.
- A2. Course "O" is a Triangle/Windward Leeward/Windward course.
- A3. Course "K" is a Triangle/Windward/Leeward course.
- A4. - The leeward mark for Courses "W", "O", and "K" will be an inflatable mark(s) set approximately 0.10 NM to windward of the starting line.
- The leeward mark for course "V" will be 0.5 NM below the start/finish line.
  - A gate mark may be used for course "W" and "V"
- A5. The course designation, distance and bearing to the windward will be displayed on a white board.
- A6. Marks, including the windward offset mark, shall be rounded in order and always left to port, except that a gate, when used, shall be rounded as described in rule 28.1(c).
- A7. Long Windward Mark
- For course "W" with an even number of legs, the Race Committee may set a long windward mark and a short windward mark.
  - The distance displayed will be to the SHORT windward mark. The long windward mark will be on the same bearing, 0.5 NM beyond the short windward mark.
  - There will be no offset mark at the long windward mark.
  - If flag "D" is displayed with course signals, that class will use the LONG windward mark for each weather leg of that race. If flag "D" is not displayed with the course signals, that class will use the short windward mark for each weather leg of that race.
- A8. **Special Finish Mark "F"**
- If flag "F" is displayed on a separate pole, the finishing line for that class will be between a staff displaying a blue flag on a Race Committee boat and an ORANGE finishing mark in the vicinity of the Sail Newport.

### B MARKS For DROP MARK COURSES

	<u>Original Marks</u>	<u>Starting</u>	<u>Finishing</u>	<u>Change Marks</u>
- BLUE Division	Orange	Yellow	Yellow	Yellow
- RED Division	Orange	Orange	Yellow	Yellow

### C COURSE CHANGE

- C1. In addition to the requirements of rule 33, the Race Committee will attempt to announce any course changes on their respective VHF channels. Failure to make such announcement shall not be grounds for redress. This changes rule 62.1 (a).
- C2. The new mark will be a different color from the original mark as described in appendix 2B.